

KEVIN WILT

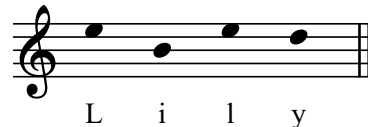
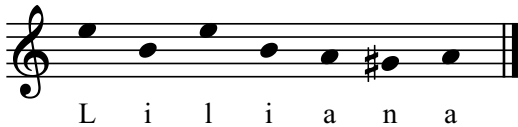
LILY-BY

for piano solo

LILY-BY

for piano solo

LILY-BY is a lullaby dedicated to my daughter, Liliana Rose Wilt, who is seven months old as of the completion of this piece. Her name and nickname (Lily), encoded into musical notes, make up the two halves of the main theme:



Unless specifically indicated, the damper pedal and una corda pedal should be used liberally to create a dream-like sound.

When in doubt, err on the side of slower rather than faster. Please do not wake the baby. Her parents are very tired.

This piece was written at the request of my colleague Kuo-Pei Cheng-Lin, who premiered it on February 26, 2023.

KEVIN WILT

The approximate duration of this work is 4:00.

For more information about this piece or any others written by Kevin Wilt, please visit:

www.kevinwilt.com

or contact the composer at:

kevin@kevinwilt.com

WHISTLING
VINE MUSIC



To Lily Rose, our little Peanut

LILY-BY

for piano solo

KEVIN WILT

Each note deliberately; less than ♩ = 96

8^{va}

pp

una corda sempre

Ped. _____ Ped. _____

Detailed description: This system contains measures 1 through 6 of the piece. The music is in 6/8 time with a key signature of three sharps (F#, C#, G#). The tempo is marked as 'Each note deliberately; less than ♩ = 96'. The piece begins with a piano (*pp*) dynamic and the instruction 'una corda sempre'. The right hand features a melodic line with slurs and ties, while the left hand provides a harmonic accompaniment. Pedal markings are shown below the staff.

7

rit......

p *pp* *dolce*

col Pedal

♩ = 92

Detailed description: This system contains measures 7 through 12. Measure 7 is marked with a '7' and a 'rit.' (ritardando) instruction. The dynamics shift from *p* to *pp*, and the instruction *dolce* is introduced. The tempo is marked as '♩ = 92'. The piece continues with a melodic line in the right hand and accompaniment in the left hand, with a 'col Pedal' instruction.

13

Detailed description: This system contains measures 13 through 16. The music continues with the same melodic and accompanimental patterns, maintaining the tempo and dynamic markings.

poco rit.

18

23

.....Still ♩ = 66

poco string.....

28

.....molto rit.....Broad ♩ = 72

rit... a tempo rit.....

Gental cadenza (freely, slowly)

33

38 **molto rit.**..... ♩ = 66 **8va**-----3

Ped. _____

43 **rit.**.....

dim. *ppp*

(Ped.) Ped. _____